

DESCRIPTION OF A NEW EUCHARID
FROM PALAU ISLANDS

By TEI ISHII

Tokyo College of Agriculture and Forestry

and SUMIO NAGASAWA

Entomological Laboratory, Kyoto Imperial University

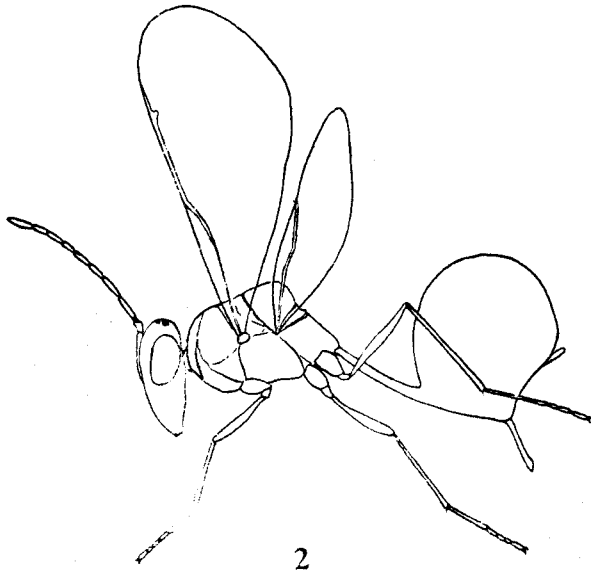
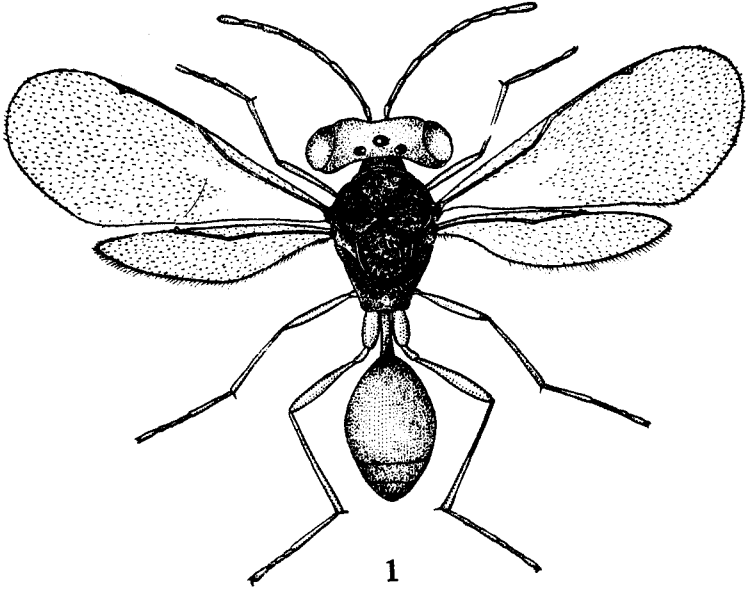
WITH ONE PLATE AND SEVEN TEXT-FIGURES

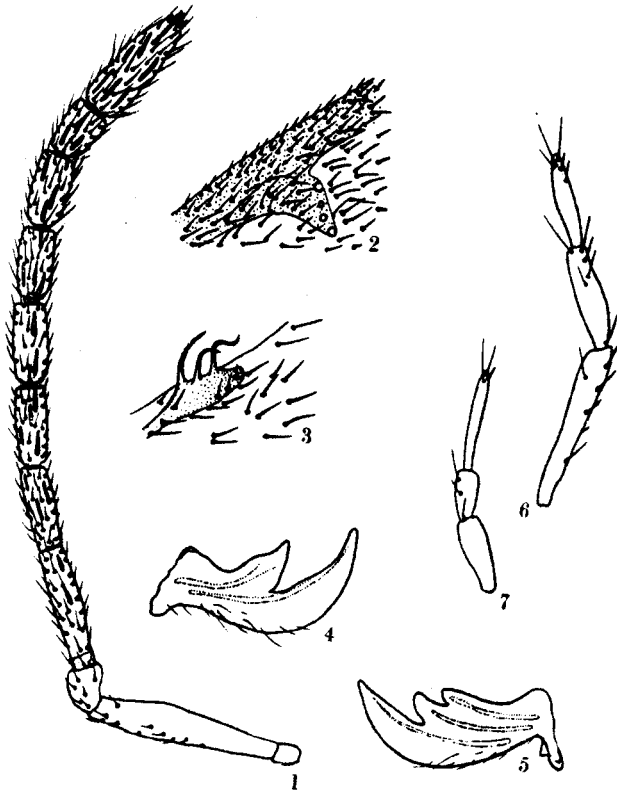
Psilogaster nishidai* n. sp.

Female.—Black in general with slight purplish reflections; antennae brown except the scape, pedicel, ring joint and basal part of the first funicular joint which are yellowish brown; mandibles and other mouth parts yellowish brown. Wings hyaline and veins pale brown; legs: all the coxae and femora black; knees, tibiae and tarsi yellowish white, but the hind tibiae being suffused with pale brown except the base and tip; the last joints of all the tarsi yellowish brown.

Head flat antero-posteriorly and wider than deep (49: 44) and smooth entirely with sparse short hairs; ocelli arranged in an arc, the posterior pair separated from one another by a little more distance than that from the inner eye margins and from the occipital margin by one half their own diameter; toruli round and very near one another; two longitudinal sutures just below the toruli, converging anteriorly and reaching the basal suture of the clypeus; clypeus trapezoid in shape with the anterior margin considerably rounded.

Mandibles long sickle-shaped, the left one bi-dentate, the right one tri-dentate with the lower teeth larger; labrum palmate with four digits, each bearing a stout spine at tip; maxillary palpi 3-jointed, the proportion in length from the basal joint 23: 14: 11; labial palpi also 3-jointed, the proportion in length 11: 7: 12.





Psilogaster nishida Ishii et Nagasawa. n. sp. (♀)

1. Antennae 2. Veins of fore wings 3. Hooks of hind wing
 4. Left mandible 5. Right mandible 6. Maxillary palpi
 7. Labial palpi

Antennae 11-jointed with one ring joint and measuring 1.34 mm. in length; scape cylindrical; pedicel a little longer than wide; funicular joints cylindrical; the first joint longest, about 4 times as long as wide; the following joints gradually decreasing in length distad; club as wide as the preceding funicular joint and as long as the distal two funicular joints combined; pedicel and flagellar joint with rather thick hairs.

Mesocutum capillus & scutellum coarsely raised-reticulated

parapsidal furrows distinct; the sides and apical part of the scutellum smooth; mesopleurae smooth except the furrow which is foveoreticulated; propodeum smooth with a median and lateral furrows which are moderately foveolated.

Fore wings uniformly ciliate except the basal part; stigmal and postmarginal veins very short; hind wings also uniformly ciliate except the basal part; legs rather slender; all the coxae smooth.

Abdominal petiol twice as long as the hind coxa, cylindrical, with 4 longitudinal keels (2 median and side keels) and the parts between the keels raised reticulate.

Abdomen smooth and considerably compressed; the first segment about as long as half the length of abdomen.

Length of body, 1.5 mm.

Male.—Similar to female in shape and colour, but smaller than female and the antennae 12-jointed; scape cylindrical; pedicel a little longer than wide; ring joint slightly wider than long; funicular joints cylindrical, the first joint longest, others gradually decreasing in length distad; club 1-jointed, twice as long as the last funicular joint.

Length of body, 1.4 mm.

This species comes near to *Psilogaster fasciventris* Brues from Australia, but it differs from the latter in colouration and in the face which is entirely smooth, not transversely striated at the below the antennae as in *P. fasciventris*.

Several specimens, of this species, males and females, were collected by S. Nagasawa at Elegi, Airai, and Malkeoku, Palau Islands on Aug. 21-23 and Sep. 2, 1940.