

Ishii 1956

specimen was devoured by a carpet beetle remaining nothing but a figure. So the writer describes here it briefly from the figure.

Male. — Reddish brown in general; the apical part of the second abdominal segment and the following segments black. Pronotum longitudinally striate; scutellum distinctly striate except the middle part; propodeum reticulate. Wings hyaline and sparsely ciliate except the basal part; fore wings two fuscous dots, the one small just below the base of the marginal vein, the other large just below the stigmal vein.

Length of body. — 3 mm.

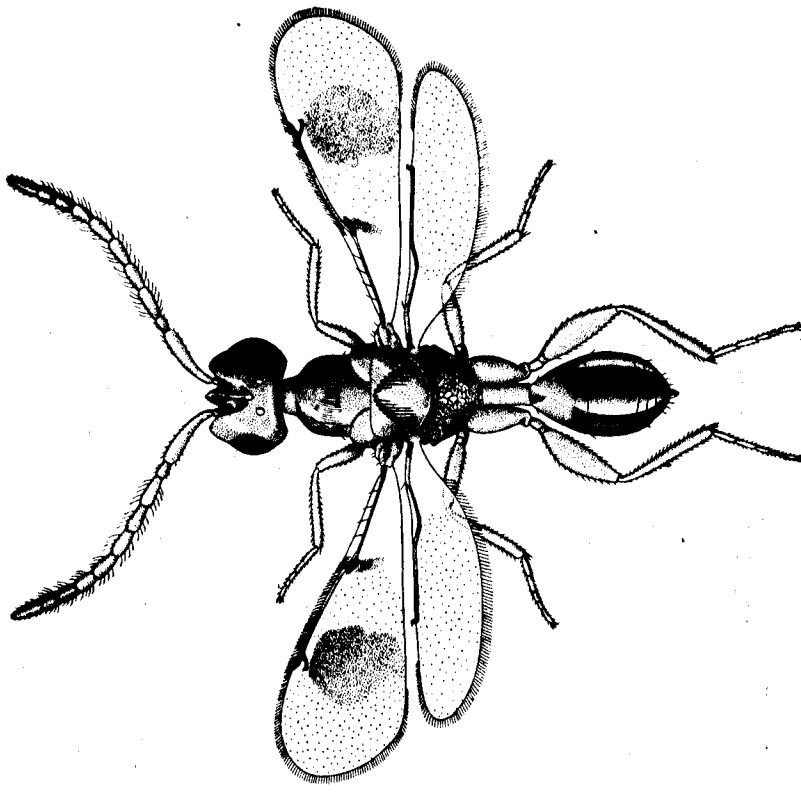


Fig. 2. *Chetospila fasciata* n. sp.

Perilampidae

*Philomides frater* Masi

1926 *Philomides frater* Masi, Konowia, V, Heft 4: 372-375.

Male. (unrecorded). — Yellowish in general; vertex, cheeks and occiput black; mesoscutum with three large black dots, the one, rectangular in shape, on the middle lobe, the others, oblong in shape, on the lateral lobes. Scutellum black at the base and tip; mesopleurae and propodeum black. The second and third abdo-

minal segments black except the lateral parts; from the fourth segment to the terminal segment black. Antennae brown. Wings almost hyaline, slightly infuscated; veins brown. Legs yellowish except the coxae which are brown.

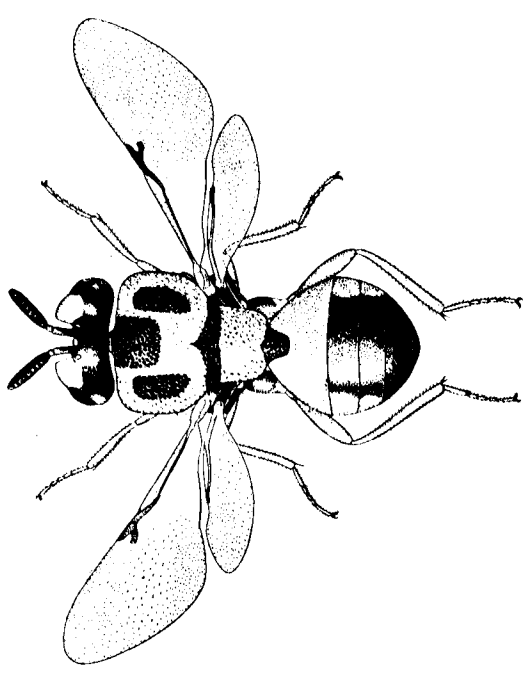


Fig. 3. *Philomides frater* Masi, ♂.

Head reticulated; thorax strong reticulated; propodeum reticulated with some longitudinal striae; abdomen smooth. Head much wider than deep; scrobes deep; ocelli arranged in an arc. Antennae about 1 mm. in length, moniliform, 10-jointed with one ring joint. Scape rather stout with sparse hairs, cylindrical, slightly widened towards apex; pedicel as long as wide with rather thick hairs on the dorsal part; funicular joints with rather dense hairs, wider than long, subequal in length and width except the first joint which is the longest, twice as long as the second; club one-jointed, ovate in form with dense hairs and as long as the preceding two funicular joints combined. Funicular joints and club with many sensoriae. Mesonotum large, truncated at the anterior margin, wider than long; parapsidal furrows distinct, and two longitudinal furrows on the anterior part of the middle lobe; scutellum moderately convex with a small blunt process; propodeum narrow with the hind angles acute; spiracles large and oblong.

Abdomen oblong in shape, depressed and a little shorter than the thorax; the first segment a little shorter than one-half of the abdomen; the following segments short and subequal in length. Fore-wings moderately ciliated beyond the basal part; marginal vein thickened; stigmal vein slender, a little shorter than the postmarginal vein; hind-wings sparsely ciliated. Legs normal; hind coxae rather stout; the first joint of the hind tarsi not especially long or stout.

Length of body. — 6 mm.

Habitat: Formosa.

Single male (Allotype) was collected by S. Sato at Hokuto, Formosa, May 20, 1929.