

ANNOTATIONES ZOOLOGICÆ JAPONENSES

VOL. 20

JUNE 1941

No. 2.

CONTENTS

OKA, A. Gedanken über Fortpflanzung, Entwicklung und Vererbung ...	57
MURAKAMI, S. On the development of the hard parts of a viviparous ophiuran, <i>Segoplinura ventralis</i> (Duncan) ...	67
IKEDA, H. Functions of the lunules of <i>Astriclypeus</i> as observed in the righting movement (Echinoidea) ...	79
IKEDA, H. Preliminary report on <i>Chorocidaris juleca</i> gen. et sp. nov., from the Ryukyu Islands (Echinoidea, Cidaridae) ...	85
YOSHII, N. Partial doubling of an annelid, <i>Morphoga sanguinea</i> (Montagu) ...	89
NAKAMURA, N. Formation of lateral regenerate in <i>Branchiaria zowerbnyi</i> ...	93
SZUKKI, S. Die Opilliones Mikronesiens ...	98
SEOK, D. M. Gimandromorfo de <i>Pieris napi</i> Linné f. <i>dulcinea</i> Butler ...	105
ISHII, T. Notes on some Chalcidoids from the Micronesian Islands with descriptions of two new Euleniids ...	106
TOKUNAGA, M. Biting Ceratopogonid midges from the Caroline Islands. ...	109
TSUDA, M. Eine neue Köcherfliege, <i>Trichoptera esakii</i> von den Palau- Inseln ...	121

PUBLISHED BY

THE ZOOLOGICAL SOCIETY OF JAPAN

ZOOLOGICAL INSTITUTE, TOKYO IMPERIAL UNIVERSITY

Notes on some Chalcidoids from the Micronesian Islands
with Descriptions of Two New Eucharids¹⁾

TEI ISHII

Tokyo College of Agriculture and Forestry

The materials dealt in the present paper were collected by Dr. Teiso Esaki in the South Sea Islands under Japanese mandate during the years 1937-1939.

I express my hearty thanks to Dr. Esaki who has kindly submitted me the valuable specimens for examination. The text-figures illuminating the present paper were drawn by Mr. Keizo Yasumatsu from the type material.

Pteromalidae

Tomocera californica Howard.

Tomocera californica Comstock, Rep. Entom. U.S.A., 1880, 1881, p. 368, n. 26, ♂ ♀,
Pl. 24, figs. 3-4.

Many nice specimens of this species were bred by Dr. Esaki from *Antonia bambusae* at Garapan, Saipan, Marianna Isls. July 5, 1939.

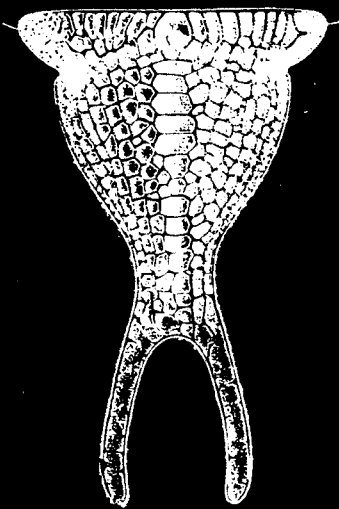


Fig. 1. *Schizaspidia ponapensis* n. sp.
Scutellum of male

Eulophidae

Aphelinae

Aphelinus chrysomphali Mercet.

Aphelinus chrysomphali Mercet, Bol. Soc.
Esp. Hist. Nat., 1912, p. 135-140.

Bred from *Aspidiotus destructor* Signoret, at
Jokaji, Ponape, Caroline Isls., July 24, 1939.

Eucharidae

Chalcera upeensis Fullaway.

Chalcera upeensis Fullaway, Proc. Haw. Ent.
Soc., II. no. 5, 1913, pp. 285-286.

This species was reported at first by Dr. D. T.
Fullaway from Upe, Guam. Dr. Esaki collected a
single female of this species at Kolonia—Paliker,
Ponape Island, Caroline Isls., Dec. 29, 1937, a
single male in Yap Island, Caroline Isls.; and two

1) Results of Professor T. Esaki's Micronesia Expeditions 1936-1940, No. 50.

males at Soḡsoḡ—Sabana, Rota Island, Marianna Isls., Nov. 4, 1937

Schizaspidia ponapensis n. sp. (Fig. 1)

Male.—Bluish in general with some metallic green reflections. Antennae brown, but the scape paler; mandibles brown with dark tip; abdomen including the petiole

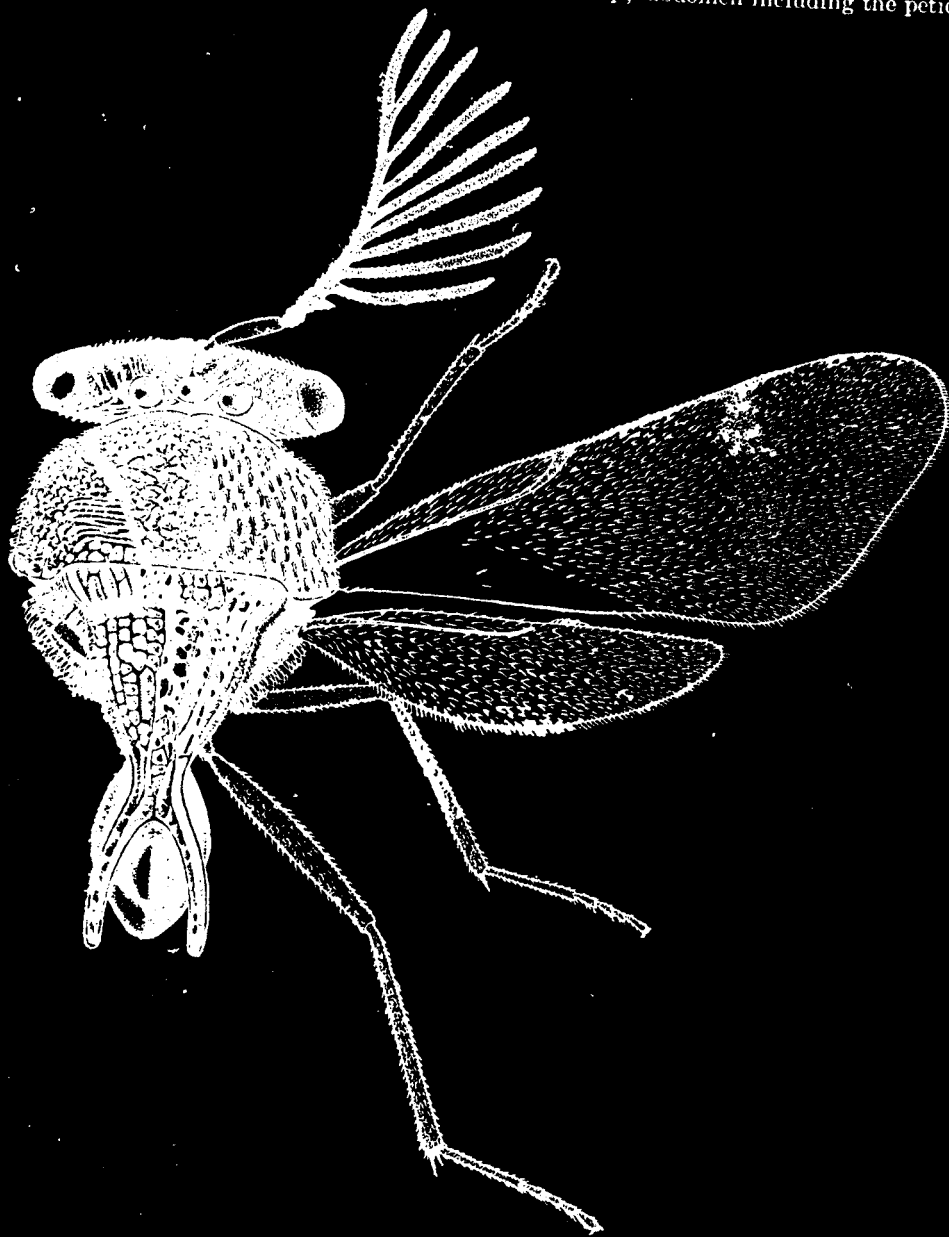


Fig. 2. *Schizaspidia polauensis* n. sp. Male

black with purple reflections; legs brownish except the coxae which are concolorous with the body. Fore wings almost hyaline with a faint transverse brownish band just below the stigmatal vein; veins dark brown.

Head much wider than deep; ocelli nearly in a straight line; face below the toruli nearly smooth and shining; clypeal sutures distinct; front and cheeks longitudinally striate; vertex and occiput transversely striate. Antennae pectinate with nine long branches, the first branch very short and pointed.

Mesonotum hairy and transversely striato-reticulate; parapsidal furrows distinct; axillae almost meeting and longitudinally striato-reticulate; scutellum strongly reticulate with a median longitudinal foveolate furrow and two long processes at the tip which are considerably shorter than the main part of scutellum; mesopleura reticulate with the upper parts smooth; propodeum strong reticulate. Abdominal petiole long, but considerably shorter than the abdomen and striato-reticulate above; abdomen small, smooth and shining.

Wings uniformly ciliate except the extreme base; marginal and postmarginal veins fairly long; stigmatal vein short.

Length of body.—3.2 mm.

A single male was collected by Dr. Esaki at Paliker—Kolonias, Ponape Island, Caroline Isls., July 30, 1937.

Schizaspidia palauensis n. sp. (Fig. 2)

This species is closely allied to *S. ponapensis* n. sp., but the body with strong metallic green reflections; antennae dark brown except the scape which is brownish; axillae strongly reticulate, but not so distinctly longitudinally striate as in *S. ponapensis*; scutellum without a distinct median longitudinal furrow, and entirely strong reticulate.

Length of body.—3.5 mm.

A single male was collected by Dr. Esaki at Ngasias, Peliliou Island, Palau Isls., Feb. 23, 1938.