

INSECTS OF JEHO [VII] - Orders: COLEOPTERA (II) & HYMENOPTERA (I)

Superfamily CHALCIDOIDEA

By

Tei ISHII, NH.

*Division of Entomology, Imperial Agricultural
Experiment Station*

PLATES I TEXT-FIG. 1

Family EUCHARIDAE

Genus *SHIZASPIDIA* WESTWOOD.

Proc. Zool. Soc. Lond., III, p. 69 (1835).

1. *Shizaspidia nekhensis* ISHII, n. sp. (PL. I, Fig. A).

Female. General color of the head and thorax metallic blue-green with bronze and purple reflections. Mandibles reddish brown. Antennae brown except the scape, pedicel and base of first funicle joint which are yellowish brown. Legs yellowish except all the coxae which are of the general body color; tip of the coxae reddish brown. Wings hyaline; veins pale brown; a brown patch just beneath the marginal vein. Abdominal petiol blackish brown, its tip and base reddish brown; abdominal segments 1-2 black; other segments testaceous excepting a brownish black band at each posterior margin.

Head very thin antero-posteriorly, one half as broad as depth; face with a median longitudinal furrow. Antennae composed of 12 joints, but in this specimen apical two joints absent; scape short, a little longer than width; pedicel as long as width at apex; funicle joints gradually decreasing in length distad; first funicle joint thrice as long as wide.

Thorax robust and much wider than the head; parapsidal furrows distinct and foveorated; furrow between the axillae and scutellum foveorated with six longitudinal keels on both sides. Scutellum bidentate at tip, the process short, about 0.3 mm. in length and with a median longitudinal

foveolated furrow.

Abdominal petiol about 1.2 mm. in length, slightly shorter than the femur of the hind legs and somewhat dilated at the middle; abdomen visibly six-segmented, the first segment longer than the rest segments combined. Legs normal, the femur considerably dilated at the middle. Tarsal joints of the hind legs in the ratio of 16:7:5:4:10.

Fore wings 5 mm. in length, faintly clouded, having a brownish patch just below the marginal vein, and very sparsely ciliated except the basal part. Hind wings 3 mm. in length; submarginal vein extends to the hooks which are six in number.

Head with transverse striations on the face, these turning upwards and curving around between the eyes; vertex transversely striate. Thorax generally foveate-punctured; petiol and abdomen smooth.

Length of body 6.5 mm.

Male. Unknown.

Locality: 1♀, Wu-cha-keu, (2. ix. 1933), Collected by K. KISHIDA.

This species is closely allied to *S. tenuicornis* ASHMEAD, but may be distinguished from the latter by the parapsides and episternum being punctured, last tarsal joints of all the legs are yellowish and by the petiol of the abdomen is dark brown.

Family EURYTOMIDAE

Genus *EURYTOMA* ILLIGER.

Eurytoma SCHMIDDECKNECHT, Genera Insectorum, 97, p. 139 (1909).

2. *Eurytoma yagii* ISHII, n. sp. (Pl. 1, Fig. 13; Text-fig. 1).

Male. Black in general. Antennae dark brown except the base of the scape, tip of the pedicel and club which are pale brown. Fore legs: coxae black; femur and tibiae yellowish; tarsi yellowish brown. Middle legs: coxae black; basal half of the femur and middle part of the tibiae brownish; apical joints of the tarsi pale brown; other parts yellowish. Hind legs: coxae and femur except the tip black; middle part of the tibiae dark brown; apical joints of the tarsi pale brown; other parts yellowish.

Wings hyaline; veins pale brown.

Head much wider than the thorax and slightly wider than depth, and shallow reticulate; frontovertex at the anterior ocellus as wide as about two-thirds the width of the head; ocelli arranged in an obtuse-angled

triangle; posterior pair separated from the eye margins by their own length. Antennae about 0.9 mm. in length; scape thrice as long as wide; pedicel as long as wide at apex; funicle four jointed; the joints gradually decreasing in width and length distad and with sparse hairs; first joint twice as long as wide; club three jointed, as long as the last two funicle joints combined.

Pronotum almost as long as the mesoscutum; mesonotum shallow reticulate; parapsidal furrows rather shallow; scutellum as long as the mesoscutum; propodeum flat and minutely deep reticulate in the middle part being roundly encircled by longitudinal keels; the part between the keels just mentioned and another outer longitudinal keels rugose as shown in text figure.

Fore wings 1.2 mm. in length and 0.63 mm. in width and uniformly ciliated, except the basal two-thirds which is sparsely ciliated; submarginal, marginal, stigmal and postmarginal veins approximately in the ratio of 16:4:4:5; submarginal vein with about 11 bristles; marginal and postmarginal veins with about 13 bristles and many short bristles. Hind wings 0.9 mm. in length and 0.27 mm. in width and uniformly ciliate except the basal part; hooks three in number.

Head, thorax, both sides of the propodeum and legs with sparse whitish hairs.

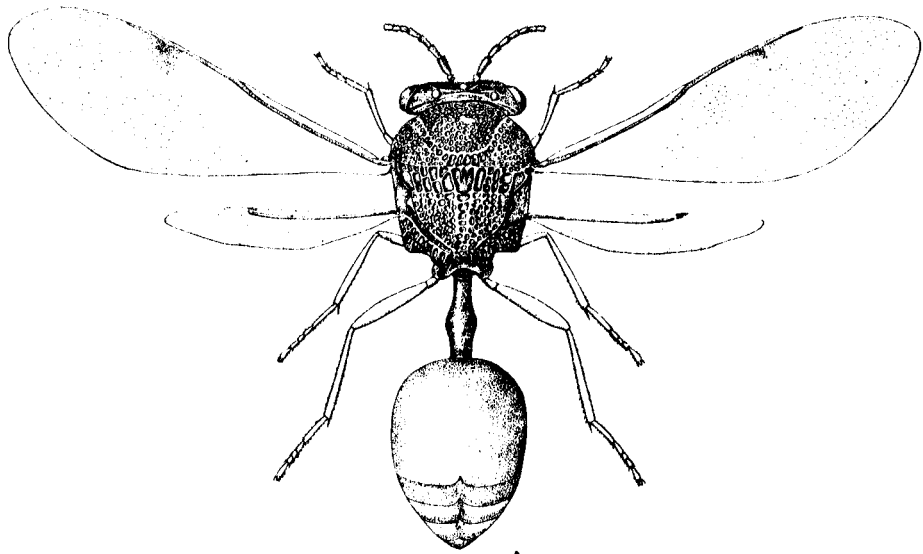
Length of body 1.65 mm.

Female. Unknown.

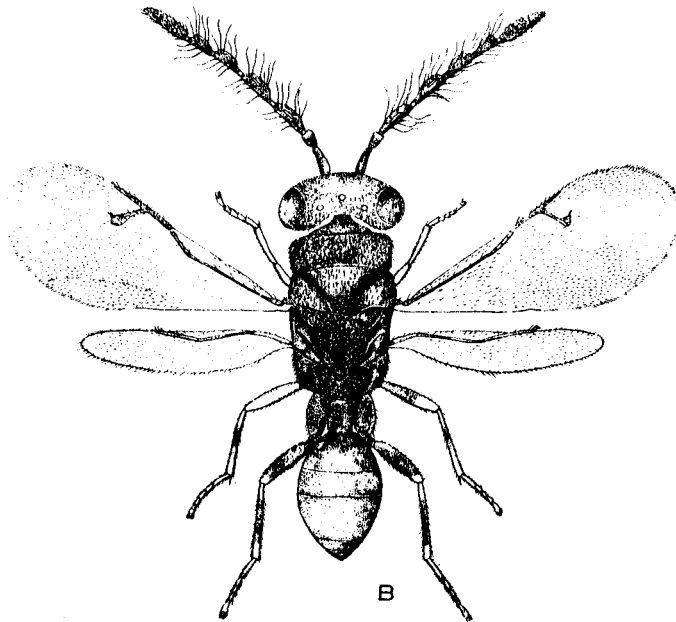
Locality: Chih-feng, 1♂ (3. x. 1933).

This is the very specimen, which Dr. Nobumasa YAGI found it dead as it was coming out of the seed of *Glycyrrhiza globra* L., which was collected by Mr. Kyukichi KISHIDA in the locality noted above and brought back by him.

It is highly probable that it is the parasite in the seed of the plant aforementioned, and it can be readily distinguished from all other species of the Genus by four jointed funicle.



A



B

A. ねつかありやどりこばち *Schizaspidia nekkensis* ISHII, n. sp.

B. かんぎうこばち *Eurytoma yagii* ISHII, n. sp.

[T. ISHII del.]